

Peran ESD STB Compact

Epoxy-based floor system that disperses static electricity. It gives a slip-resistant surface.



- 
Electrostatic discharge properties:
 Used in areas where it is necessary to disperse static electricity
- 
Compliance with standards:
 Meets EN IEC 61340, anti-static requirements and EN 13813: 2002, EN 1504: 2004, Ericsson 1528-119 demands
- 
Slip-resistance:
 Can be applied in wet and dry processing areas delivering safe finish
- 
Hard wearing:
 High scratch, impact and chemical resistance

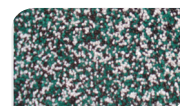
Technical Information¹

| | | | |
|---|---------------|--------|--------|
| ANTISTATIC PROPERTIES: | | | |
| 5x10 ⁴ – 1x10 ⁸ Ω | IEC 61340-5-1 | | |
| SLIP RESISTANCE² | | | |
| Dry > 40 | EN 13036-4 | | |
| TEMPERATURE RESISTANCE | | | |
| Tolerant up to 50°C | | | |
| WATER PERMEABILITY | | | |
| Karsten test - Nil (Impermeable) | | | |
| WEAR RESISTANCE | | | |
| AR2 | EN 13892-4 | | |
| COMPRESSIVE STRENGTH | | | |
| > 40 N/mm ² | BS 6319 | | |
| FLEXURAL STRENGTH | | | |
| 15 N/mm ² | BS 6319 | | |
| TENSILE STRENGTH | | | |
| 10 N/mm ² | BS 6319 | | |
| IMPACT RESISTANCE | | | |
| 1 kg > 1,8 m 2 kg > 1,5 m | EN ISO 6272-1 | | |
| BOND STRENGTH | | | |
| B3,0 N/mm ² | EN 13892-8 | | |
| SPEED OF CURE | | | |
| | 10 °C | 20 °C | 30 °C |
| Light Traffic | 36 hrs | 24 hrs | 16 hrs |
| Full traffic | 72 hrs | 48 hrs | 48 hrs |
| Full chemical cure | 12 days | 7 days | 7 days |

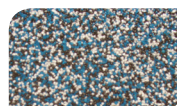
Standard colour chart



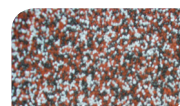
Grey 7710



Green 7730



Blue 7720



Red 7720

The applied colours may differ from the examples shown.
For a full colour chart and samples, contact your local Flowcrete office.

¹The figures in the table beside are typical properties achieved in laboratory tests – these results may vary depending on the conditions on the installation site.
²The final anti-slip properties of the floor are influenced by the application method, the size and shape of the aggregate used for the topcoat (aggregate recommendations available from Flowcrete Polska), the degree of abrasion, maintenance and the nature of the dirt.

Model Specification

| | |
|-------------------|----------------------------|
| System: | Peran ESD STB Compact |
| Finish: | Gloss |
| Thickness: | approx. 2–3 mm |
| Colour | According to the catalog |
| Producer: | Flowcrete Group Ltd |
| Supplier: | Flowcrete Polska Sp. z o.o |
| Telephone: | +48 22 879 89 07 |

Installation Service

The installation should be carried out by a Flowcrete approved contractors with a documented quality assurance scheme. Obtain details of our approved contractors by contacting Flowcrete Polska or enquiring via our website at www.flowcrete.com.pl.

Products Included in this System³

| | |
|------------------------------|--|
| Primer: | Peran STC (Protop 1000); copper tape ⁴ |
| Primer with scatter: | Peran ESD Primer; Peran ESD Compact Primer Sand |
| Coating with scatter: | Peran STC Peran Sand 2011; Peran ESD STB Compact Filler; |
| Topcoat: | Peran STC |

³ If other resins are used contact Flowcrete Polska for further details.

Detailed application instructions are available upon request.

⁴ If measuring range resistance is $R_u > 10^9 \Omega$

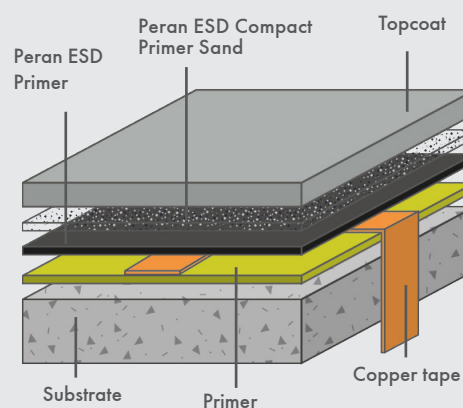
Substrate Requirements

Concrete or screed substrate should be class min. C20/25, a minimum bond strength of 1,5 MPa (pull-off test), surface even, clean, free from laitance, dust and other contamination. All damages in the substrate should be repaired prior to applying the flooring. The substrate should be dry up to 75% RH as per BS 8204 (5% moisture content per weight) and free from rising damp and ground water pressure. In case of higher humidity, one should use Hydraseal DPM as primer. Details to be found in the *Flowcrete Resin Flooring Substrate Requirements*.

Aftercare – Cleaning and Maintenance

Clean regularly manually or using a machine in conjunction with a mildly alkaline detergent. Flowcrete Flooring Cleaning Instruction available upon request.

System Design



Environmental Considerations

The finished system is assessed as non-hazardous to health and the environment. The long service life and seamless, impermeable surface with perfect adhesion to the substrate reduce the need for repairs and maintenance.

Technical information, recommendations and instructions concerning the product use, storage and maintenance included in this System Data Sheet are based on Flowcrete Polska Sp. z o.o. (further related as „Flowcrete“) knowledge and experience, reflecting the best acknowledged way of using the material for a given moment. Taking into consideration other factors that are beyond the producer's control, including differences in quality of substrates, tools and other complementary materials, weather conditions, proper installation and also cleaning and maintenance, Flowcrete cannot take responsibility in case of failure to conform with information and instructions included in this System Data Sheet or, respectively, written recommendations from authorized Flowcrete representatives. One should always conform with up-to-date norms and building principles, and also safety, hygiene and health protection rules according to the information included in Material Safety Data Sheets and also on the products packaging. This System Data Sheet replaces all previous versions. In order to receive up-to-date System Data Sheets contact Flowcrete Polska

[25/01/18]

Flowcrete Central & Eastern Europe
 ul. Marywilska 34 03-228 Warsaw Poland
 Tel: +48 22 879 8907 Fax: +48 22 879 8918
 Email: poland@flowcrete.com

www.flowcrete.com.pl